

The Overton Oracle

Volume 22 Issue 11

Overton's Free Newspaper - delivered to every household monthly for 21

November 2020



All Wales is under 'fire break' restrictions until November 9th.

After that, the times and openings of events and local business's may change in line with amended Welsh Government restrictions. Check business websites or Facebook "Overton on dee...a lovely funny old village" group for the latest information, and check out Wrexham C.B. information on <https://gov.wales/wrexham-county-borough-lockdown-frequently-asked-questions>

The White Horse

The White Horse will be closed until 9th November in line with the Wales Lockdown. But we will be cooking **takeaway** pizzas and burgers on Saturday evenings and **takeaway Sunday lunches**. We will also be selling takeaways of your favourite Joules ales, beers and wines to remind you of us while we're closed! Ring **07833 461207** to order. We look forward to welcoming you all back on 9th November - stay safe folks.

Kathy, Jim and the family

The Two Doves

We will be operating a takeaway for food, drinks and gifts (by the door). Thursday, Friday and Saturday – 10.00 – 2.00pm. Customers can call ahead if they want to place an order or pop in and wait 5 mins while we'll prepare it. 01978 710310

Cross Foxes

The Cross Foxes is providing a **Click & Collect** service 7 days a week including Sunday lunch. Your choice of food (and drink if you wish) is boxed up and waiting for you at the time you select. Ring 780380 or look at the website www.crossfoxes-erbistock.co.uk for the menu and to place an order

No Monthly Litter pick

Because of the Welsh Government 'Fire Break' lockdown there will be no litter pick in November.

Local MP "Cuts the Ribbon" at Official Opening of Overton Post Office

Simon Baynes MP for Clwyd South "cut the ribbon" on 9th October at the official opening of Overton Post Office at Overton Medical Practice, High Street, Overton. This restored a full-time Post Office to Overton. It is open Monday - Friday 8.30am-6pm.

MP Simon Baynes, said: "A Post Office and a



medical centre provide vital services to a community and it is great that Overton Medical Practice is now able to provide both services under one roof." Overton Community Council Councillor, Charlotte Copeman, who also attended the official opening event, said: "It is great news to have a full-time Post Office once again, which makes it very convenient to visit. Overton Medical Practice has carefully thought through how patients and Post Office customers can both visit." Overton Practice Business Manager, Tony Marriott, said: "We thought, wouldn't it be a wonderful opportunity if Overton Medical Practice could provide the solution by incorporating a full-time Post Office alongside the reception counter. The partners of the practice agreed that as we are a local service provider this would sit very well with our role supporting the local community." (more pics on page 6)



Remembrance Sunday 8th November 2020

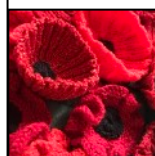
Following the announcement of a "Firebreak Lockdown" until the 9th November, by the Welsh Government, our tribute at Overton War Memorial will this year by necessity have to be restricted. There will be no parade or Church service, and those representatives of the Royal British Legion and other local organisations present will be kept to a small number.

It is regrettable that this year due to the Coronavirus restrictions we are not able to mark the occasion as in previous years. But safety is paramount, and nationwide, individuals are being encouraged to remember the fallen of the two world wars by standing on their doorsteps at 11am on the 8th November to observe the 2 mins silence. Please be aware that these details were correct at the time of going to press, but could be subject to change

THANK YOU FOR YOUR SUPPORT

THE ROYAL BRITISH LEGION OVERTON BRANCH

A display of poppies for Remembrance, which has been created by ladies from the village (and beyond) can be viewed when St Mary's Church is open from Monday 9 November. Opening times, which will be more frequent to give people space for reflection at this time, will be displayed on the church noticeboard and on the church website and Facebook page.



Musings from the Manse

by Rev'd Phillip Poole



Dear friends,

First of all, I want to say a big thank you to all those who have worked so hard to reopen Overton Methodist Church. Our first service was on Sunday evening 18th October, ironically just a day before a further closure was announced by the Welsh Government. We were disappointed to hear that we would now need to close for 3 further Sundays, but we're looking forward to opening again on November 15th at our new Autumn and Winter service time of 2.30pm.

A few weeks ago my wife Lisa and I visited Chester Cathedral, and within the body of the Cathedral a dozen or more easels were arranged, each bearing a Bible verse and a prayer. The prayers focussed on the stresses and strains people and organisations were feeling due to Covid-19, and it was really helpful to be able to visit these stations one by one and to quietly pray, reading the words from each display. It was good to see that people could enter without having to pay and that the Cathedral was being offered as a place of prayer to the people of the City, something so commendable in these difficult times.

Elsewhere in the Cathedral was a Lego model of the Cathedral complex. When the model is completed it will incorporate more than a third of a million individual bricks and tiles. Building has been on hold in recent months, and there are repairs to be done – even Lego buildings are subject to wear and tear apparently – but the model reminded me that we are all part of God's family, each individual with their part to play, and each one missed when we cannot be together.

The most fascinating item on display in the Cathedral was an almost life-size model of the Last Supper, with its entire surface covered over in a mosaic of around 50,000 keys from computer keyboards. The letters and symbols appeared random, but then occasionally we were able to pick out a meaningful word or phrase. It made me think about how important technology has been in helping us to connect with God and with each other during the last six months. For instance, Methodists throughout the Wrexham area have been meeting for worship on Zoom each Sunday morning since the beginning of April. We've got so attached to our Zoom service that we have decided to keep it going indefinitely, and we've been keeping in touch through newsletters and social media too, which has been a new adventure for some of us. We have been wary of technology in the past – but now we have come to view it as a precious gift.

On a personal note, Lisa and I have received many messages of congratulation following the birth of our new granddaughter Ellie. We're looking forward to being able to visit with the family when lockdown ends, meanwhile we are enjoying photographs and the occasional 'baby Zoom'. This year has taken so much away from so many of us, so it's good to be reminded that life continues to bring us blessings too, and we thank God and praise him for all his goodness.

Blessings and best wishes to all,

Phil Poole, Overton Methodist Church

email: overtonoracle@gmail.com

Overton-on-Dee W.I. News

theWI
INSPIRING WOMEN

Overton-on-Dee W.I. would like to thank Rev Peter Mackriell and Paul Whittaker for organising this year's Harvest Festival so brilliantly under such difficult circumstances. It was a triumph of effort under pressure! The on-line auction was an inspired idea and all the Hampers looked magnificent.

Well done to all concerned, I know our W.I. enjoyed putting our Hampers together and we are pleased that so much was raised for Christian Aid and the Wrexham Food Bank.



During these last months, a lot of us have been enjoying walks around the Village and surrounds, and have come to appreciate even more what a beautiful area we live in. There is such a strong Community spirit in Overton and we feel fortunate to be part of it.

We held our first W.I. Zoom Meeting on October 22nd, and we had a Guest Speaker to tell us about life as a Show Judge, so although things feel very different, we can still be together albeit remotely, and I'm sure it was a great evening.

You too can join us; we have a "Try the WI" offer for 6 months to 31st March for only £10.75 and includes all the perks of membership. For more details contact Margaret on 01978 710451.

We hope you enjoy the recipe on page 4 !

Margaret O'Neill President, Overton-on-Dee W.I.

Friends of St Mary's

Friends of St Mary's usually have their glass of wine thankyou party at this time of year to celebrate another year of fundraising for the fabric and repairs to our beautiful village church.



Covid 19 has prevented us from planning any events in the same way as before, such as our Magic Evening and Bridge Teaching session held in 2019 which added to the funds generously donated from Overton residents. But we will continue to collect donations as soon as possible. The pandemic has focused our minds on the value of human contact and of finding strength in our local community and its projects. If you would like to be involved we would love to hear from you. You can email Peter on rossellipeter@gmail.com

We need to ensure St Mary's is handed over in good condition to the next generation!

Fitness Classes at Overton Village Hall

Classes starting as soon as we can...Tuesday and Friday mornings (9.30am) and Tuesday evenings (6pm). Catherine is a fitness instructor and personal trainer with over 15 years in the industry. If interested, please call/txt Catherine on 07917 283855.

Overton Playcentre

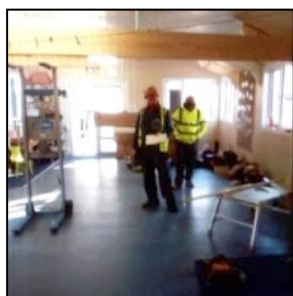
These last few weeks have been a wonderful tonic to the backdrop of the pandemic, for children and staff alike. In Playgroup we have delighted to meet Nicky's chicks, harvested apples (including eating a few straight off the tree!), cuddled a Guinea-pig, gone for autumn walks round the village. We had apple and hand printing and created pictures out of seeds squidged out of a pumpkin. As part of this year's theme of Transport we have created tractors out of nailing wood offcuts together and are looking forward to painting them -



look out for the photos on our open Facebook page Overton Playcentre CIO. At St Mary's B&A Club the children have enjoyed playing together in their bubbles outside with skipping ropes, tennis, football and many other outdoor games.

Overton Playcentre CIO would love to say a HUGE thank you to our local Butcher, ME Evans for their very kind and generous donation of fruit and veg. They have been supplying us since before the summer and when we asked for the invoice in October to pay we were so delighted and touched to see it was £00.00!! In these times many Childcare facilities are really struggling, and our own fundraising events have had to be cancelled as they have always been based on social events bringing the families of Overton community physically together and therefore cannot happen. So we are even more thankful for such a thoughtful unexpected way of supporting us! Thank you!!

We have also been fortunate to gain a grant from Moondance for concertina doors that were installed by David and Ian from Beehive Partitions. These folding doors will allow us to split the big room in half when needed in order to make us even more Covid compliant. We are incredibly grateful for this to have been carried out ahead of the latest 2 week Lockdown.



As we leave the autumn colours we look forward to embracing winter, hatted, scarved and gloved, with glowing rosy faces, delighting at the ice forming on puddles amongst many other things that our children love to celebrate winter for!

Looking after each other

At the time of writing, Wrexham County Borough is in local lockdown for who knows how long. Sadly even if this lockdown is relatively short, it's probably safe to assume that these coming Winter months maybe difficult ones.

We in Overton are so lucky to have the fantastic sense of community that we do, so this request may go under the heading "goes without saying", but it's still nevertheless worth repeating ... As the dark, winter months approach (and more possible lockdowns) please can we all remain very aware of neighbours and those in our immediate area and make sure they're OK?

As well as reactivating the fantastic support service which our fabulous team of volunteers carried out so amazingly earlier on in the year, we're also looking at establishing a telephone befriending service for anyone who needs it over the coming months. We're working on the technical mechanics of this at the moment, and we'll keep you updated on this, but if any of you have previous experience of telephone befriending we'd really welcome your help and advice so we can get it right.

So, it looks like we may have some more trying months ahead to test our mettle. But we'll get through it, and if we can get through it together, then so much the better

If you can help please contact volunteer@overt-on-dee.co.uk or telephone 07423 569949

Thank you

I would sincerely like to thank and complement Jonny Bell on the excellent condition in which the cemetery is currently in. I have been there on a number of occasions in the last couple of months and it is a real pleasure to stroll through the beautiful tranquil surrounding. Many thanks and may it long continue.

Richard Jones

Thank you

May I thank all who sent cards and/or flowers for my 90th birthday. It was heartening to receive so many. I still can't get used to the fact that they are really all for me. Thank you,

Jean Hughes

Update & New Opening Hours for Overton Recreational Club

Subject to on any further Government updates we hope to reopen at 7pm on 9th November. Our opening hours are then Monday to Friday 7-10pm and Saturday & Sunday 3-10pm. Last orders will be 9.45pm each night and all customers must strictly be vacated by 10.20pm. Membership is now half price - £2 per person until 31st December. We now have Bingo every Thursday and every other Sunday - eyes down at 8pm. Cash prizes to be won - the more players the bigger the prizes!

Quiz night is also every other Sunday. Starts at 8pm. Teams of up to 4 (must be from same household). 50p per person.

Most Premier League football matches are screened live on BT/Sky Sports on our big screen TVs.

Darts, Snooker, Pool plus our 2 gaming machines are available to use.

Current Welsh Gov Covid restrictions apply. Please be assured that we have plenty of space to allow for social distancing, table service will be provided and our customers are expected to wear a face covering when entering the club and when using our facilities. They can be removed when sat at your table.

So come along and join us for a bit of fun in these bleak times!

AUTUMN SONNET

Autumn has unfurled her leaves of gold
 Red apples clinging to the trees above.
 Soft summer days we long to keep on hold
 Clinging to warmth and sunshine we so love.
 Children seek conkers midst the falling leaves
 Their eyes alight like berries after rain.
 While swifts no longer sweep amongst the eaves
 Tall tractors carry maize along the lane.
 Coldness and frost will soon transform this scene
 And noisy fireworks splinter the dark sky.
 A hint of wind is blowing sharp and keen
 And we cannot our winter thoughts deny.
 Away with this sad muse of wintry days
 Bright fires and books will fill our lazy gaze.

by Margaret Evison
 Overton-on-Dee W.I.

St Mary's Church

Thanks to all who took part in our **Harvest auction** for Christian Aid and Wrexham Food Bank. Because of local lockdown we took the whole thing online and had bids of £508 for the 17 baskets generously supplied by community groups, plus donations in excess of £100 and are very glad to be able to support these charities working with vulnerable people locally and internationally. We are now planning a Christmas fundraising event in a similar vein, as we can't hold our now-traditional bingo.



Online services resumed on October 25th, for the 3 weekends of the firebreak lockdown in Wales. These can be watched any time and can be viewed at <https://www.stmarysoverton-on-dee.org/worship>

All Souls is a time to remember all those who have died, and this year this season will be especially poignant. There will be an All Souls service on-line on Sunday 1 November (and available after that). If you would like loved ones remembered by name during this service, please email by Friday 30 Oct. to revpeter@maelormissionarea.uk

The Display of Poppies for Remembrance will be open from Nov 9th. For nearly a year about 50 volunteers from Overton and the surrounding area have been creating poppy magic by knitting, and crocheting some 3,000 poppies. Donations will be accepted when viewing the display, in aid of the Royal British Legion and St Mary's Church Overton. The ladies have all worked so hard, before and during the Covid months and Tracey Leech would like to send a huge thank you to them all.

The Real Advent Calendar is the UK's only Fairtrade calendar which comes with a free 24 page Christmas story-activity book and supports charitable causes. There is a Fairtrade **chocolate** and a line of the Christmas story behind each of the 25 windows. No other calendar enables parents and children to experience the Christmas story in this way. Money raised from the sales of the calendar will also help provide care and support for mums and new babies in African villages. The Real Advent Calendar costs £3.99. Order yours by November 8th from Janet Edwards 01978 710277 janetedwards18@tiscali.co.uk

W.I. Lockdown Fruitcake

Ingredients:

1 cup of water	1 cup of brown sugar
1 cup of sugar	Juice of a lemon
4 large eggs	mixed nuts
2 cups of dried fruit	Bottle of Whisky
1 tsp baking powder	

Method:

Sample the Whisky to check for quality.
 Take a large bowl. Check the whisky again, to be sure it is of the highest quality, pour one level cup and drink. Repeat.
 Turn on the electric mixer, beat one cup of butter in a large fluffy bowl. Add 1 tsp of sugar and beat again.
 Make sure the Whisky is still OK. Cry another tup.
 Turn off the mixer. Break 2 legs and add to bowl.
 Chuck in the cup of dried fruit. Mix on the turner. If the dried fruit gets stuck in the beaters pry it loose with a drowscriver.
 Sample the Whisky to check for consistency.
 Next sift 2 cups of salt. Or something. Who cares?
 Check the Whisky. Now sift the lemon juice and strain your nuts. Add one tablespoon of sugar or something. Whatever you can find.
 Grease the oven. Turn the cake tin to 350 degrees. Don't forget to beat off the turner.
 Throw the bowl out of the window, check the whisky again and go to bed.

Macmillan Coffee Morning



Well done to Kate Davies who organized a fantastic Coffee Morning to support Macmillan Nurses. It was all beautifully socially distanced in the roadway of Bramblewood Close. Thank you to all those who donated fantastic cakes and raffle prizes and their support. It was all a great success and made £261.40 for Macmillan Cancer Support.



St Mary's School News - 'Here We Are' Together

A new month has dawned at St Mary's and, during October, all classes have been extremely busy working on our whole-school theme of 'Here We Are'. Learning and skills-based activities have been based around the text, 'Here We Are: Notes for Living on Planet Earth' by Oliver Jeffers. This beautifully illustrated book, which appeals to all ages, creates wonder for the World that we live in and reminds us that we all have a shared role



to play in looking after our planet and the people that live here. As part of their work on this, Year 3 have been making clay and glass bowls based on the solar system. (photo left)



Year 5 have written Haiku's about their favourite places on Earth and Year 6 have given presentations on 'Inspirational People' who provide examples of resilience, strength, innovation and creativity that we can be inspired by. Whilst we still need to keep to our Year-Group 'bubbles', taking part in this joint school theme has brought us together in different ways as we consider our shared roles in the World.



There has also been lots of outdoor learning taking place too. For snack, younger pupils have loved picking apples from our trees at school and one pupil in Year 1 even said that they were some of the sweetest apples he had ever tasted! In Forest School, Year 4 have made and decorated their very own 'story stones' (photo left) – working in groups to illustrate stones and then put them together to make a story.



This required lots of team work and listening skills, but the children had lots of fun! Year 4 pupil, Grace, reported: "It was fun because we had to set out the story and join the characters together." Earlier on this term, Year 1 and 2 have also been busy reading and learning about the book 'The Colour Monster' by Anna Llenas, which looks at how different emotions can make you feel. Using colour as a basis of their learning, pupils have enjoyed experimenting with tint and shade and mixing with primary colours. (photo left)



They looked at the amazing work of Andy Warhol and his famous 'Pop-Art' portrait of Marilyn Monroe and had a go at making their own in a similar style. In Nursery, our newest additions to the St Mary's family have settled in well and, right from the youngest to the oldest pupils, we have all enjoyed being back after the long 'lockdown' period – appreciating our School more than ever!

by Tomos, Oliver and Tigs, Year 6 Reporting Team

Overton Wildlife Group

Though there might not be much in flower in November there are still many wildflower seedheads around, important for wildlife during the winter, providing a vital food store for birds and mammals, but also giving homes to small insects as they shelter from the winter cold.

Wood avens - many small round seed heads, which easily break apart into little hooked seeds.

Hogweed - tall hollow stemmed plant has a wide parasol of smooth flattened seeds. (right)

Travellers joy - a trailing climber this plant covers fences or hedgerows with its fluffy white plumes.

Campion - looking like little cups, campion seed heads spill over with little black seeds. Once these are gone the seed heads make a great home for little bugs.

Cat's ear - cat's ear has a seed head similar to a dandelion, parachute-like seeds which blow away in the wind.

Wild carrot - unlike hogweed and other umbellifers, wild carrot curls in on itself when the flowers have died, giving it a very distinctive shape.

Burdock - most people will recognise the small round seed heads of the greater and lesser burdock, from picking them out of their clothing after a winter walk. It's the many small hooks which make these seeds so very sticky.

Teasel - the teasel is a well recognised seed head, mostly from it's use in flower decorations. This wonderful wildflower is a great source of food in the winter for finches and other small birds. (right)



Overton Community Council

New Councillor

We would like to introduce our newest Community Councillor; Leigh Kellaway. Leigh has lived in the area for the past 8 years and brings with him a wealth of experience through work and previously being a Community Councillor in another area of Wales.

Community Councillor steps down

Thank you to Sue England for her support, hard work and enthusiasm during her time as a Community Councillor, especially during the run up to the Village Fete. Sue will be sorely missed.

Adverts are not included in the on-line archived edition of the Oracle.

This is because the archive of the Oracle is available on-line going back many years and the adverts and contact details would be out of date.

Thank you

June, Richard, Gareth Jones and family wish to express our many thanks for ALL the support, cards, flowers and donations received in remembrance of Reg. It was truly amazing they just kept coming and coming; we then realised just how much Reg was admired and respected. To see so many of you lining the streets on our way to the church was remarkable. Reg would have been so honoured, proud, humbled and extremely grateful, we thank you all for that. We will miss him greatly.



Overton Royal British Legion 120 Club

Results of the "120 Club" Draw for October 2020. 120 members entered and the draw was made on October 14th 2020. Winning numbers were selected by the 'Random Number Generator'.

Winners -

1st Prize	£240.00	No 5	Anne Billington
2nd Prize	£120.00	No 54	Gwyn James
3rd Prize	£ 60.00	No102	Avril Lawrenson
Legion Fund: £180.00			

CONGRATULATIONS

Next Draw: Wednesday November 11th 2020

If you wish to join please ring DAVE AUSTIN 01978 710678.

Please Note: THE RBL "120 CLUB" DRAW WILL CONTINUE TO TAKE PLACE EACH MONTH DURING THE CORONAVIRUS CRISIS.

"If you don't pay ...you don't play!"

Extra photos from the opening of the new Overton Post Office



Who's who from left: Tony Marriott, Charlotte Copeman (Chair Community Council), Simon Baynes (MP for Clwyd South), James Marriott (Post Office Counter Assistant), Dr Andrew Doyle (GP Partner and Sub-Post Master), Debbie Churchill (Post Office Reporting Officer) and Dr Gareth Bowdler (GP Partner & Sub-Post Master).

What's On

November Diary for St Mary's Services

Sunday November 1st & 8th No service
 Sunday November 15th 11.00am Morning Prayer
 Sunday November 22nd 11.00am Holy Communion
 Advent Sunday November 29th 11.00am Holy Communion

November Diary for Overton Methodist Chapel

Sunday November 1st & 8th No service
 Sunday November 15th 2.30pm Mr Martin Woodhall
 Sunday November 22nd 2.30pm Mr Collen Ndoro
 Sunday November 29th 2.30pm Rev. Phillip Poole

Tuesday November 10th 6.50pm Overton Community

Council held remotely via 'GoToMeeting'. If members of the public would like to "attend" they should contact Katrina Chalk on clerk@overtonoracle.co.uk for log in details. Members of the public wishing to speak 6.50pm-7.00pm

Support our local businesses

The White Horse open from Nov 9th
 Monday to Thursday from 3pm
 Fri. Sat. & Sun. from 12noon



Two Doves Coffee Shop open from Nov 10th
 for sitting in, plus temporary out door seating at rear.
 Tuesday to Saturday 10am-3pm.
 Afternoon Tea/picnics/Bufets to takeaway all available
 For Gift Shop items have a look at www.2doves.co.uk

Overton Supermarket & Fuel

Monday to Saturday 7.30am - 8.30pm.
 Sunday 9.00am - 8.30pm

The Corner Shop Open Monday to Friday 7am-6pm
 Saturday 8am-6pm, Sunday 8am-2pm.
 Click & Collect and home delivery

M.E. Evans Butchers open Monday to Friday 8am-5pm,
 Saturday 8am-2pm, Phone **01978 710342** or there's a
 click and collect see website - www.meevans.co.uk

Knolton Market Garden & Cheese Machine Open 24/7.
 A safe way to buy cheese, butter, eggs. Organic veg
 starting this month with broad beans and salad potatoes.
 Now offering Vermulen's bread on Fridays.

Overton Fish & Chip Shop Open Fri & Sat 12pm - 2pm,
 Tuesday to Saturday 5pm-8pm.

Alaya Spice Open Tuesday - Sunday 4.30pm - 10.30pm
 For Take Away Orders & Restaurant Reservations
 Tel: 01978 710114

The Post Office at Overton Surgery open Monday to
 Friday 8.30am to 6pm, closed 30 mins for lunch.

Home Farm Overton has a new website
<https://homefarmoverton.co.uk> Sausages, bacon, eggs,
 meat, pies, sausage rolls, cooked meats etc and other
 daily staples. Tel: 01978 710141

Family Announcements

Congratulations to Kathy and Jim of the
 White Horse, Overton on their recent marriage.



Happy November Birthdays to Den Owen,
 Lydia Evison, Pearl Edwards, Hugo Hunter,
 Pauline Dodd, Phil Edwards, Dave Smith,
 Mike Done, Heather Davies, Lucy Roberts,
 Rob Netzband-Piggott, Gerald Williams, Belinda
 Sampson, Peter Rosselli, Laura Edwards and Honor
 Grigg.



Sincere condolences to the family and friends of
 Hadyn Roberts from Parkside who passed away in
 October.

Congratulations

Congratulations to Tomos Williams
 and Jessica Mitchell, year 6 pupils
 from St Mary's School, on
 achieving their black belt in
 Taekwondo.

From their family and friends.

*Photo of Jessica & Tomos with their
 instructor Tracy Lomax*



Wanted

For Sale

Dustbin Days

Thursday Nov 5th Garden Waste & Recycling / food
 Thursday Nov 12th General Waste & Recycling / food
 Thursday Nov 19th Garden Waste & Recycling / food
 Thursday Nov 26th General Waste & Recycling / food

PLEASE REMEMBER

**Copy deadline is 20th of
 the previous month.**

**Get your events & news
 to us early to avoid
 disappointment**

**THIS INCLUDES
 ADVERTISEMENTS**

**Leave your contributions
 & announcements at the
 Corner Shop or email
overtonoracle@gmail.com**

Your Oracle Team -

**Chairman & Advertising
 David Burton; Treasurer
 Rob Netzband-Piggott;
 Distribution Cynthia
 Davies; Euan Stevenson,
 Sean Clarke, Jenny Bellis,
 Gwynneth Austin & John
 Herbert.**

**Editor - Jill Burton.
 Tel 710631 or e-mail
overtonoracle@gmail.com**

All articles & advertisements in the Overton Oracle are published in good faith & without prejudice. Space constraints mean that submitted articles may be edited or not published. Please be mindful that personal details submitted will be available on the internet.

**The Overton Oracle is printed and supported by "Business Print & Design" Wrexham. Tel. No. 01978 664726
 e-mail: info@bpandd.co.uk**

The Oracle (in normal times) is delivered FREE to more than 650 homes in the Overton Area. Our thanks go the volunteer distributors who make sure you receive your copy each month. We operate a postal service for our long distance readers, and we are also on the Web. www.overtonoracle.com You can also e-mail us at overtonoracle@gmail.com

Useful telephone numbers; POLICE: non emergency calls -101 LITTER CLEARANCE: 01978 298989

email: overtonoracle@gmail.com